



DATA CENTER FLOORING



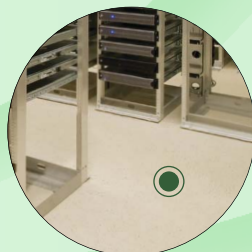
From simple sealers to heavy duty resurfacers – Dur-A-Flex has your floors covered

As the digital world continues to grow, the need for new data centers to support it will also expand. With their unique design and operational requirements, data centers require an infrastructure that can run 24/7/365 with confidence. Whether it's a Tier I or Tier IV facility, the right flooring plays an integral part of that operation. Dur-A-Flex offers seamless flooring systems that meet the needs of today's newest data center designs.

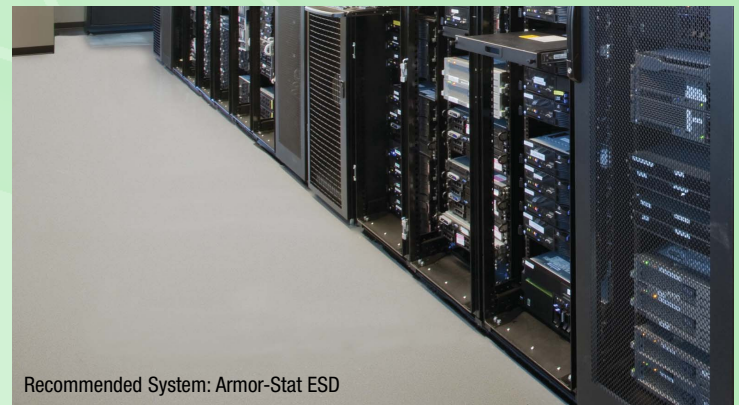
- Seamless
- Waterproof
- Dust Proof
- Smooth, High Gloss Finishes
- UV Stable, Light-Reflective
- High Moisture Tolerance Over New Concrete
- ESD (Electro-Static Dissipative)
- Chemical Resistant



Under Suspended Floor



On Slab



Recommended System: Armor-Stat ESD

Computer Equipment Rooms

Considered the heart of most data centers, Computer Equipment Rooms require dust-free, waterproof floors that provide a durable barrier to the corrosive elements of concrete. From economical sealers beneath raised floors to smooth, light-reflective coatings for on-slab operations, Dur-A-Flex offers a variety of floor systems to meet any requirement.

Electrical Rooms

The key to ensuring a reliable, continuous operation is having a steady supply of power. Backup generators and battery UPS systems can require added performance from your flooring. Dur-A-Flex floors are durable – able to tolerate heavy loads and provide excellent chemical resistance to ensure that your floors will never effect or interrupt your facility's operations.



Recommended System: Shop Floor





DATA CENTER FLOORING

Mechanical Rooms

Water containment, chemical resistance and safety are just some of the needs in mechanical room environments. Here is where Dur-A-Flex floor systems provide an extra degree of strength and performance. Seamless wall to wall construction and integral cove base creates a clean look with an easy to maintain surface. An elastomeric waterproof membrane offers maximum protection in keeping your facility up and running.



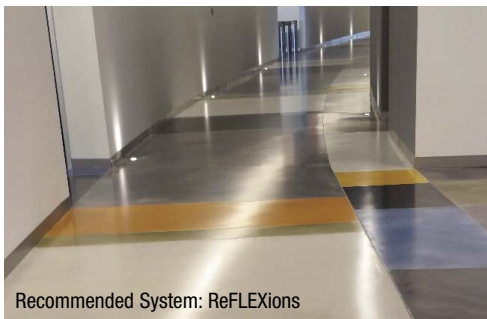
Recommended System: Shop Floor MR

Test Labs

Attractive flooring that is easy to clean and chemical and stain resistant is a must in labs. Dur-A-Flex durable, seamless flooring easily stands up to the daily wear in these areas.



Recommended System: Hybri-Flex ES



Recommended System: ReFLEXions

Aisles and Corridors

Dur-A-Flex low-maintenance, durable floors let you eliminate costly stripping and waxing cleaning processes, allowing you to put that money back into your facility's budget. Our slip and stain resistant floors are available in a variety of colors and finishes to fit your design needs.



Recommended System: Shop Floor

Loading Docks

Dur-A-Flex offers heavy-duty flooring systems that meet the heavy load and hard-wearing requirements of the highest traffic shipping and receiving docks. The slip and chemical resistant properties of our floors helps to keep your docks safe and clean.



Recommended System: Accelera HC

Restrooms and Locker Rooms

Dur-A-Flex floors offer a durable, slip resistant surface that can handle water with ease. The seamless feature eliminates the maintenance of dirty tile and grout while providing a completely waterproof surface. Create attractive designs using single or multiple colors and blends of quartz or vinyl chips.

